



PT-P710BT Labelling Machine

The Brother P-Touch PT-P710BT is the latest Bluetooth label printer that works with your smartphone or tablet via Brother's P-Touch Design&Print and iPrint&Label apps and comes with print-ready templates and frames.

- Bluetooth connection via the Design&Print and iPrint&Label apps
- Sleek and stylish design
- Prints 3.5, 6, 9, 12, 18 and 24mm labels
- Prints durable laminated TZe tape
- Fast 20mm/sec print speed
- Automatic cutter
- Print anywhere with a long-life Li-ion battery included

LABELS THAT STICK.

P-touch

Organise your office in style with the PT-P710BT

Try out the useful templates with pre-made labels and pattern designs. From labelling file folders, cables and wires or creating barcodes, to making gift tags and scrapbook pages, there are more uses than ever for the PT-P710BT.



Print anywhere, anytime

Use the Design&Print or iPrint&Label apps and design labels from your smartphone.



High Speed Printing

The fastest thermal label printer in its class with 20mm/sec print speed.



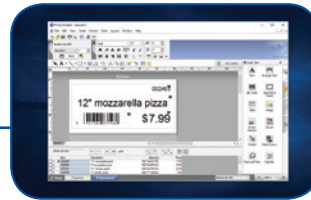
Li-ion Battery

Keep labelling longer with a Li-ion battery included in the box.



Compact & Portable Design

Built to fit into any home or office environment.



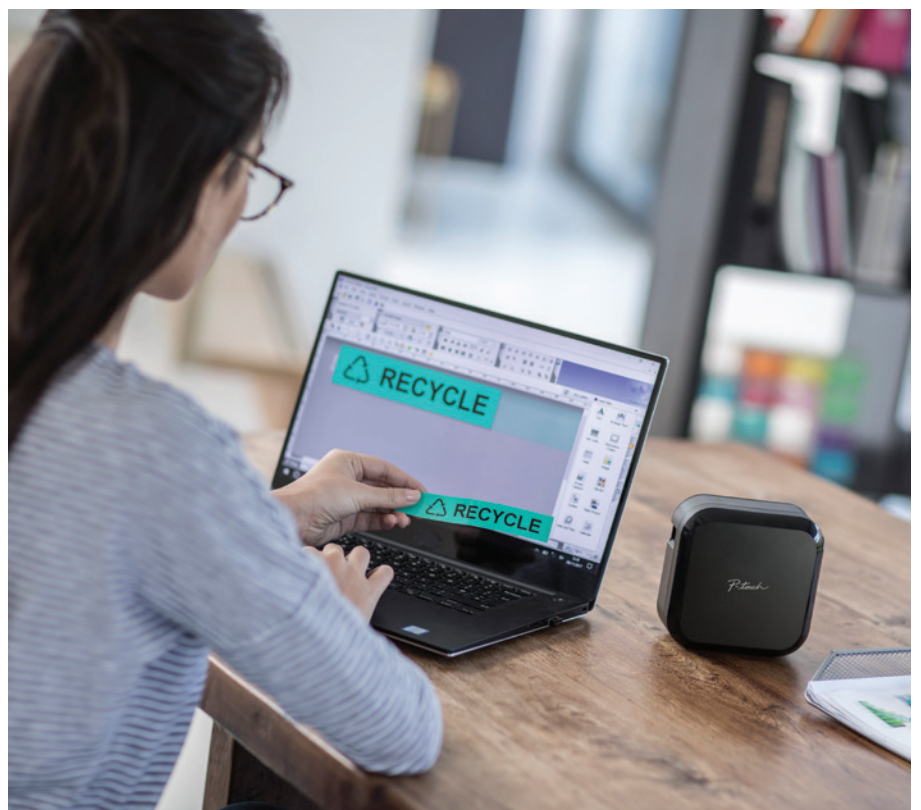
Connect to PC or Mac

Connect via USB and access Brother's P-touch Editor software to create detailed label designs

Brother's Design&Print App and iPrint&Label App

Tested to work with Android* and Apple iOS*, these apps allow the customisation and selection of fonts, designs and material to suit your preferences.

The apps can even display the actual text and background colours in print preview mode!



*Operating systems: Android (4.4 or newer) and Apple iOS (iOS10)

Expand your creativity with a great range of tapes

With a great range of different tapes to choose from, the possibilities are endless. Create stylish premium, ribbon, decorative and laminated durable tapes that will add extra flair to your home or office.

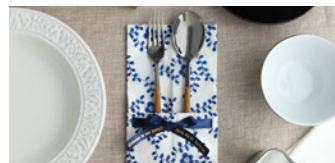
Premium Tape Range

Add some shine to your organisation with three new premium tapes providing a glittery alternative.



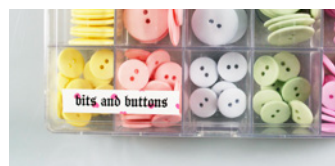
Ribbon Tape Range

Select from four choices of premium quality, beautiful satin ribbons. The gold characters on the ribbons are printed using thermal (heat transfer) technology meaning they do not fade or fall off, and can be integrated into clothing.



Decorative Pattern Tape Range

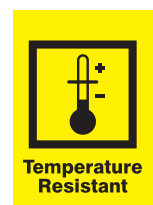
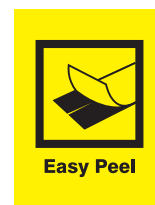
Add a personal touch with the durable and unique pattern tapes. With four options to choose from, your gifts will stand out from the rest.



TZe Tape Range

Brother P-touch laminated TZe tapes consist of seven layers of materials, resulting in a thin yet extremely strong label. The thermal transfer ink is sandwiched between two protective layers of PET (polyester film), which protects the text against the effects of liquids, abrasion, temperature, chemicals and sunlight.

As the labels have been tested to the extreme, you can be confident of a professional quality label that has been designed to last.





Technical Specifications

Print Speed	20mm/sec
Print Resolution	180 dpi (180 x 360dpi in high resolution mode)
Cutter	Automatic cutter
Print Method	Direct thermal
Power supply	Li-ion battery (PA-BT-005) or USB
Tape type	TZe tape: 3.5, 6, 9, 12, 18, 24mm
Min. / Max. label length	30mm / 499mm (Ribbon: 299mm)
Interface	USB, Bluetooth (MFi Certified)
Operating System	Windows 7, Windows 8, Windows 8.1, Windows 10 MAC OSX 10.11, 10.12, 10.13
Mobile OS	Android 4.4 and newer, iOS10 and newer
Software Development Kits (SDK)	Android and iOS
Contents	PT-P710BT Labeller, 1 x TZe-251 4m (24mm width) tape, Li-ion Battery Pack, USB Cable
Dimensions	128 (W) x 67 (D) x 128 (H) mm
Weight	0.38kg

P-touch

TZe
TAPE

Contact:

brother
at your side


Brother
Earth
Working with you for a better environment
www.brotherearth.com



[linkedin.com/company/brother-international-australia/](https://www.linkedin.com/company/brother-international-australia/)



[youtube.com/user/BrotherAU/videos](https://www.youtube.com/user/BrotherAU/videos)