



## Wide Format, Professional label printer range

- Prints on labels up to 102mm wide, capable of printing shipping postage labels for packages
- Wide range of connectivity options
- PC, Mac®, iOS+ and Android™ compatibility
- High speed printing of up to 69 labels per minute\*
- Use continuous rolls and cutter to print labels up to 3m\*\* in length
- Barcode Label Crop and Print function lets online sellers easily print product and other barcode labels from A4/Letter size label sheet templates (Windows® OS only)



\* Based on using standard address labels, black text only, at 300 X 300 dpi.

\*\* Print up to 3m in length from P-Touch Editor or 1m in length from mobile apps and P-Touch Editor Lite.

\* Only the QL-1110NWB is iOS compatible.



The Brother QL-1100 series professional label printers offer unrivalled versatility not only in the office, but also warehouse, postal, facilities management and other industries.

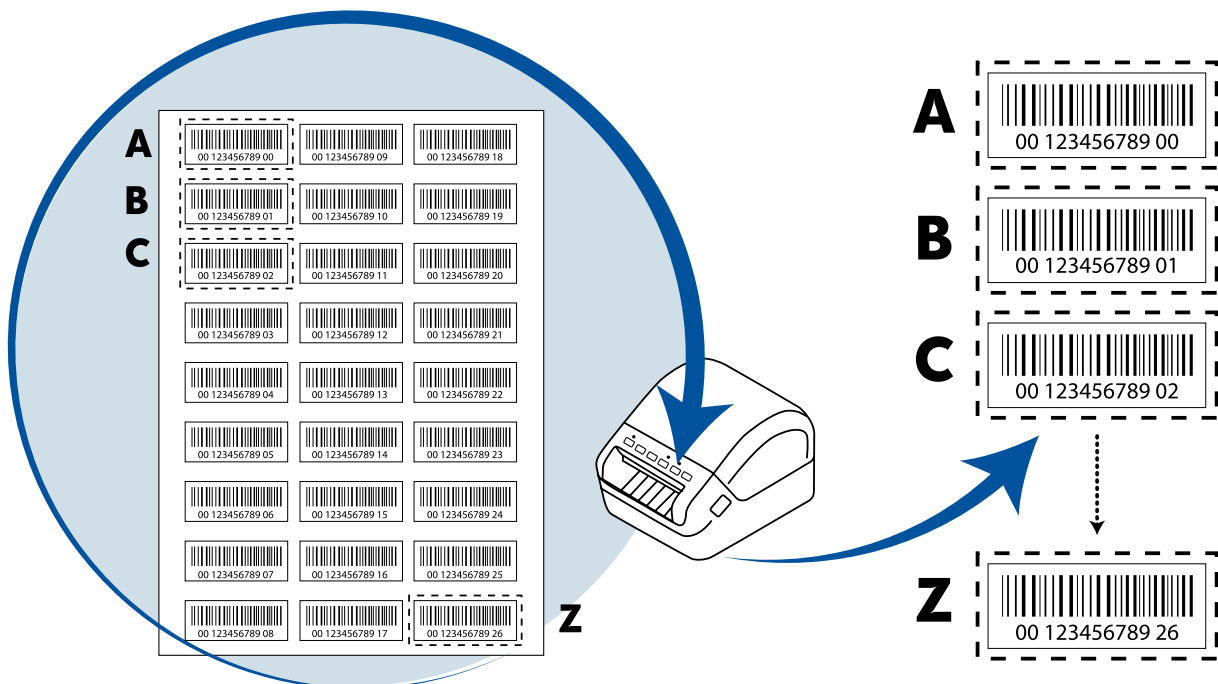
Create labels with black print up to 3m\* in length, from PC, Mac®, iOS+ or Android™ devices. All models allow easy connection to desktop computers using USB. The flagship Brother QL-1110NWB also adds Wireless, Ethernet and Bluetooth® wireless connectivity.

For developers and systems integrators looking to incorporate label printing as part of their solutions, software development kits for Windows, iOS+ and Android offer an easy way to add support for the Brother QL-1100 series label printers.

\* Print up to 3m in length from P-Touch Editor or 1m in length from mobile apps and P-Touch Editor Lite. \* Only the QL-1110NWB is iOS compatible.

## Barcode Label Crop and Print *Windows® OS only*

The Barcode Label Crop and Print feature on the Brother QL-1100 series automatically identifies and crops individual labels (including barcodes) from an A4/Letter sized sheet and prints each label one by one. You can print the entire sheet of labels to the QL-1100 series individually or select a section of labels using the snapshot feature and only the selected labels will print individually. This is a great feature for product labels or other labels that sheet formats are already generated. Now you can easily print only the labels you need quickly.



# Software solutions

With label design apps for desktop PC's and mobile devices, and SDK's to integrate the QL range into your own applications, you can choose the best option for your label printing needs.

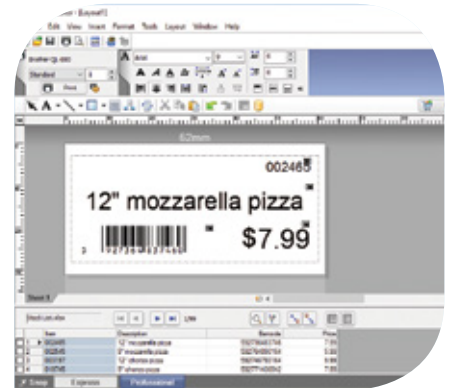


## P-touch Editor Lite / P-touch Editor Lite LAN

Built inside the Brother QL-1100, this easy to use label design software works without the need to install software or drivers. Working like a USB flash drive, simply connect to your PC using USB, and launch the software from the drive that appears. Include images, frames and any of your fonts on your label design and print! A version for network connected models is also available - simply run the software to allow multiple PC's in an office to print labels to the one printer. Again, no installation needed.

## P-touch Editor with Microsoft Office add-in

Design professional labels including images and logos, barcodes and frames. Link to data contained in Excel or .csv files, to print multiple labels quickly and efficiently. The Microsoft Office add-in lets you highlight, click and print right from within Word, Excel, or Outlook.

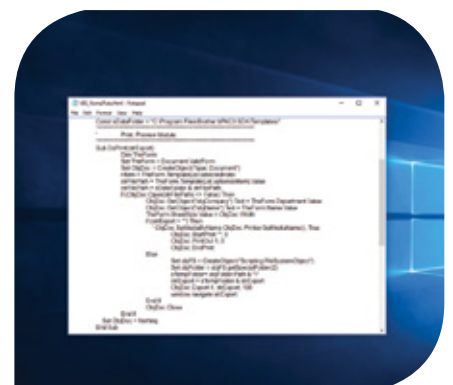


## Brother iPrint&Label app for iOS+ and Android smartphones/tablets

Print labels on the Brother QL-1100 series using the free iPrint&Label app. Connect via Wi-Fi or Bluetooth® (on Brother QL-1110NWB), and choose one of the pre-defined templates or quickly design your label from scratch. This free app is available from your mobile device's app store by searching "Brother iPrint&Label".

## Software Development Kits for Windows, iOS+ and Android

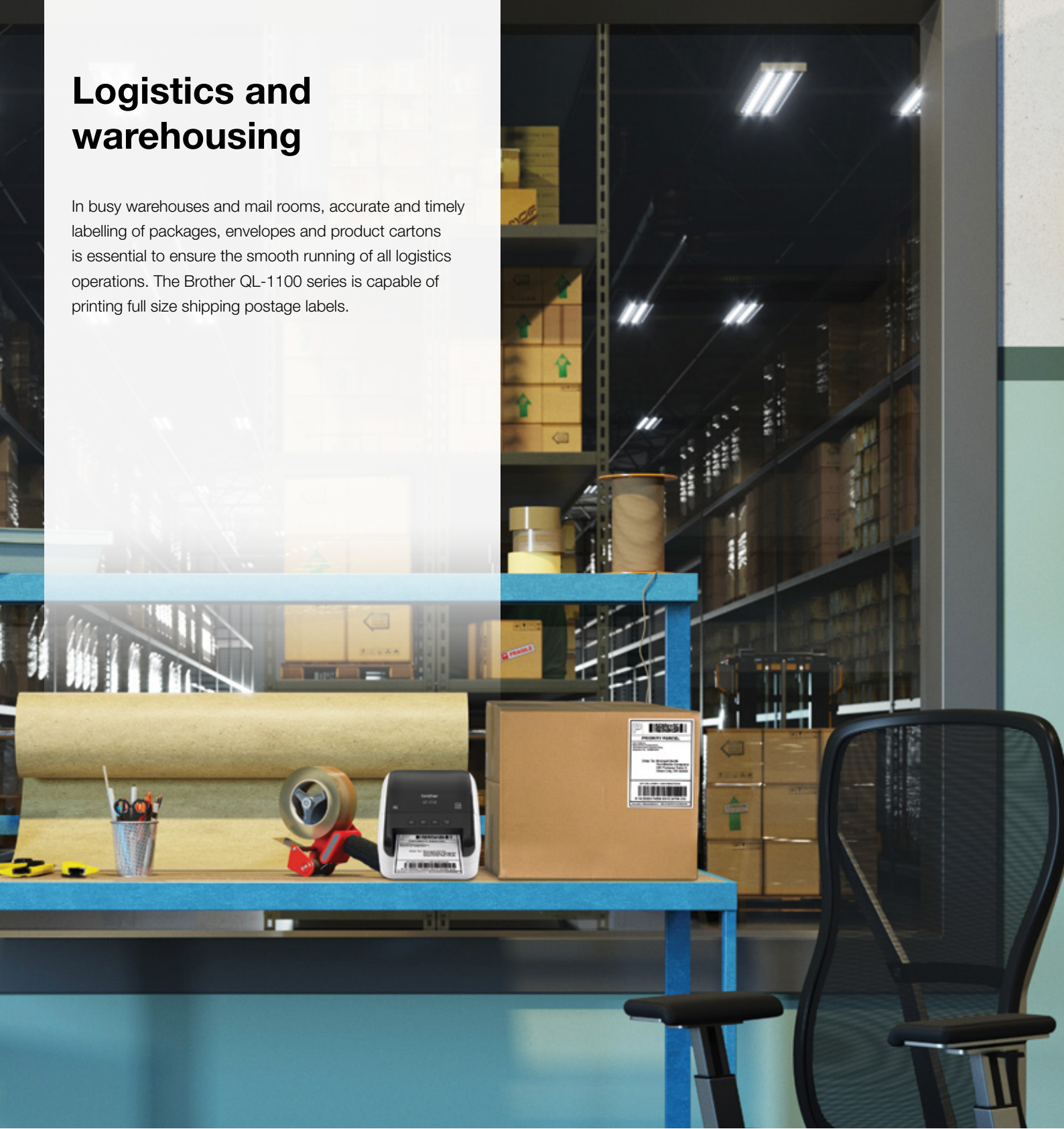
System integrators and software developers can now take advantage of various Brother SDK's that allow easy integration of label printing directly within their own apps and software. For more information please visit <https://www.brother.com.au/service-and-support/software-development-kit.html>



+ Only the QL-1110NWB is iOS compatible.

# Logistics and warehousing

In busy warehouses and mail rooms, accurate and timely labelling of packages, envelopes and product cartons is essential to ensure the smooth running of all logistics operations. The Brother QL-1100 series is capable of printing full size shipping postage labels.



Handling labels



Postage labels



Shipping labels



Product packaging



# DK rolls for the QL-1100 label printer range

Wide range of labels available in paper and plastic film material, pre-sized labels or continuous rolls available to use with the QL-1100 Series.

DK Die-Cut Labels	Material	Colour	Size	Item No.
Standard address label (400/roll)	Paper	White	29 x 90 mm	DK-11201
Large address label (400/roll)	Paper	White	38 x 90 mm	DK-11208
Small address label (800 roll)	Paper	White	29 x 62 mm	DK-11209
Shipping label (300/roll)	Paper	White	62 x 100 mm	DK-11202
File folder label (300/roll)	Paper	White	17 x 87 mm	DK-11203
Multi-purpose label (400/roll)	Paper	White	17 x 54 mm	DK-11204
Square label (1000/roll)	Paper	White	23 x 23 mm	DK-11221
CD/DVD label (100/roll)	Film	White	58 mm	DK-11207
Round label (1200/roll)	Paper	White	12 mm	DK-11219
Round label (1000/roll)	Paper	White	24 mm	DK-11218
Large multi-purpose (600/roll)	Paper	White	102 x 51 mm	DK-11240
Large shipping label (200/roll)	Paper	White	102 x 52 mm	DK-11241

DK Continuous-Length Tapes - 30.48m	Material	Colour	Size	Item No.
Continuous-length	Paper	White	12 mm	DK-22214
Continuous-length	Paper	White	29 mm	DK-22210
Continuous-length	Paper, non-adhesive	White	54 mm	DK-N55224
Continuous-length	Paper	White	62 mm	DK-22205
Continuous-length	Paper, removable	White	62 mm	DK-44205
Continuous-length	Paper, removable	Yellow	62 mm	DK-44605
Continuous-length	Paper	White	102 mm	DK-22243

DK Continuous-Length Tapes - 15.24m	Material	Colour	Size	Item No.
Continuous-length	Film	White	29 mm	DK-22211
Continuous-length	Film	White	62 mm	DK-22212
Continuous-length	Film	Yellow	62 mm	DK-22606
Continuous-length	Film	Clear	62 mm	DK-22113

# Specifications

**QL-1100**

**QL-1110NWB**

Printing / Media		
Printing technology	Direct Thermal	
Maximum Resolution (dpi)	300 x 300	
Maximum Print Speed (labels per min.)*	Up to 69 labels per minute (110mm/sec)	
Tape Sizes	Die-cut and Continuous	
Maximum Tape Width (mm)	102mm	
Maximum Print Width (mm)	102mm	
Maximum Label Length	Up to 3m from P-Touch Editor or 1m from mobile apps and P-Touch Editor Lite	
Cutter	Auto	
Cutter Life	Up to 300,000 (die-cut labels) 150,000 (continuous labels)	
Connectivity		
USB	USB version 2.0 full-speed	
USB host capability	Yes (HID class)	
Bluetooth® wireless technology	Bluetooth 2.1+EDR	
Bluetooth® profiles	SPP(Serial Port Profile) OPP(Object Push Profile) BIP(Basic Imaging Profile) HCRP(Hard Copy Cable Replacement Profile) iAP/(MFi supported) profile	
Wireless LAN	IEEE802.11b/g/n	
Wireless LAN security (Infrastructure mode)	WEP, WPA-PSK/WPA2-PSK (TKIP/AES), LEAP (CKIP), EAP-FAST (TKIP/AES), PEAP (TKIP/AES), EAP-TTLS (TKIP/AES), EAP-TLS (TKIP/AES)	
AirPrint®	Yes	
Wired LAN	10/100 Base-TX	
Mobile Device Compatibility		
Software/App^	Brother iPrint&Label, free app download for USBtoGo printing from your Android™ mobile device	AirPrint®, Brother iPrint&Label, free app download for wireless printing from your Apple® or Android™ mobile device
Memory		
Flash (for label templates)	7.8	
Locations (for label templates)	99	255
Power		
Power	220-240V AC Internal Power Supply 120V ~ 50/60Hz 1.6A	
ENERGY STAR® certified	Yes	

\* Based on using standard address labels, text only, at 300 x 300 dpi.

^ Requires connection to a wireless network. For more details regarding Brother iPrint&Label app visit [www.brother.com.au](http://www.brother.com.au) and search iPrint&Label.

• Depending on your environment, you may not be able to print in full width. For the details, see our website, [support.brother.com](http://support.brother.com). Note: We recommend designing your labels with enough margin to cater for any cut off that occurs due to the label being fed into the machine incorrectly.

# Specifications

**QL-1100**

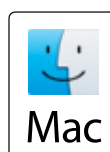
**QL-1110NWB**

Weights / Dimensions		
Dimensions	170mm x 221mm x 151mm	
Weight	1.71kg	1.71kg
Software / Firmware		
Operating System	<b>PC:</b> Windows 10, Windows 8/8.1, Windows 7, Windows Server 2008, 2008 R2, 2012, 2012 R2, 2016, <b>Mac:</b> OS X® v10.11.x - v10.13.x	
SDK availability (visit <a href="http://www.brother-usa.com/lp/civ/home.aspx">http://www.brother-usa.com/lp/civ/home.aspx</a> )	b-PAC (for Windows) Brother Print SDK for Android™ (only USB)	b-PAC (for Windows) Brother Print SDK for Android™ Brother Print SDK for iPhone/iPad (for iOS*)
Supported printer commands	Raster ESC/P P-touch Template	
Barcode symbologies (using P-touch Editor)	CODE39, CODE128, UCC/EAN128(GS1-128), ITF(I-2/5), CODABAR(NW-7), UPC-A, UPC-E, EAN13, EAN8, ISBN-2(EAN13 AddOn2), ISBN-5(EAN13 AddOn5), Laser Barcode, POSTNET, RSS(RSS14 Standard, RSS14 Truncated, RSS14 Stacked, RSS14 Stacked Omni, RSS Limited, RSS Expanded, RSS Expanded Stacked), PDF417(Standard, Truncate, Micro), QR code(Model1, Model2, Micro), Data Matrix(ECC Square, ECC Rectangular), MaxiCode(Model2, Model3, Model4, Model5) RSS symbols / CODE93 / POSTNET / UPC/EAN EXTENSION / MSI / QR Code (model 1, model 2, micro QR)PDF417 (Standard, Truncate, MicroPDF417) / Data Matrix(ECC200 Square, ECC200 Rectangular) / MaxiCode / Aztec (Windows only), IMB	
Barcode symbologies (Built-in printer firmware)	CODE39, CODE128, UCC/EAN-128(GS1-128), ITF(I-2/5), CODABAR(NW-7), UPC-A, UPC-E, EAN13(JAN13), EAN8, GS1 DataBar(RSS)(GS1 DataBar Omnidirectional,GS1 DataBar Truncated,GS1 DataBar Stacked,GS1 DataBar Stacked Omnidirectional,GS1 DataBar Limited,GS1 DataBar Expanded,GS1 DataBar Expanded Stacked), PDF417(Standard, Truncate, Micro), QR Code(Model 1, Model 2, Micro), Data Matrix (ECC200 Square, ECC200 Rectangular), MaxiCode, CODE93, POSTNET, UPC-E EXTENSION, MSI, Aztec	
Internal fonts	Bitmap fonts: Letter Gothic Bold, Helsinki, Brussels, San Diego, Brougham Font sizes: 24, 32, 48 dots Outline fonts: Letter Gothic Bold, Helsinki, Brussels Font sizes: 33-400 dots (22 sizes)	
Date/Time Stamp	PC generated	
Included items		
In the box	P-touch Editor Software & Driver (Web Download), AC Power Cable, USB Cable, Starter Rolls: DK-11247 Diecut Large Shipping Labels (41 labels), DK-22205 Continuous Length Paper Tape – 2.4" (62mm) x 16.4'	

\* Only the QL-1110NWB is iOS compatible.

# brother

at your side



"Made for iPod," "Made for iPhone," and "Made for iPad" mean that an electronic accessory has been designed to connect specifically to iPod, iPhone, or iPad, respectively, and has been certified by the developer to meet Apple performance standards. Apple is not responsible for the operation of this device or its compliance with safety and regulatory standards. Please note that the use of this accessory with iPod, iPhone, or iPad may affect wireless performance.

iPad, iPhone, iPod, AirPrint and Mac are trademarks of Apple Inc., registered in the U.S. and other countries. Bluetooth word mark and logos are owned by the Bluetooth SIG, Inc. and any use of such marks by Brother Industries, Ltd. is used under license.

The Android robot is reproduced or modified from work created and shared by Google and used according to terms described in the Creative Commons 3.0 Attribution License.

Wi-Fi Certified logo is a registered trademark of Wi-Fi Alliance®.

All specifications correct at time of printing. Brother is a registered trademark of Brother Industries Ltd. All other brand names and product names are registered trademarks or trademarks of their respective companies. © 2015 Google Inc. All rights reserved. Android is a trademark of Google.

Contact

brother  
at your side



LinkedIn Brother International Australia

[www.brother.com.au](http://www.brother.com.au)

[/BrotherAustralia](https://www.facebook.com/BrotherAustralia)